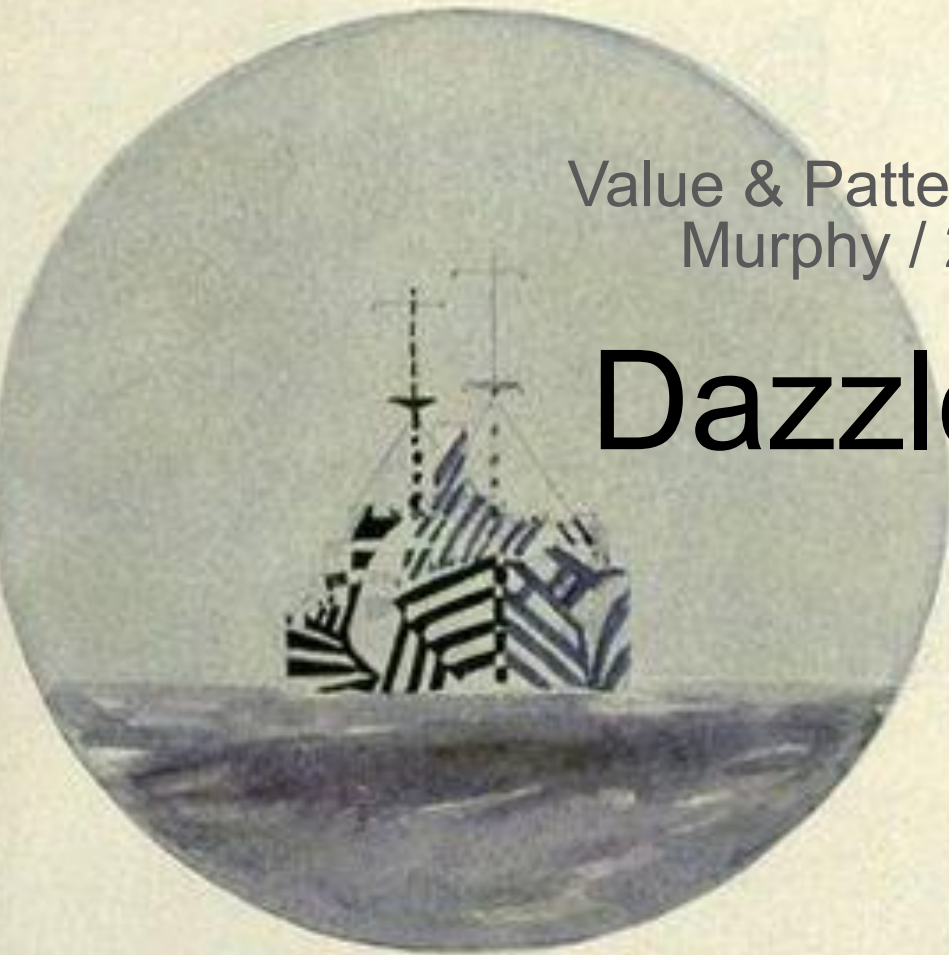


Value & Pattern Assignment
Murphy / 2D Design

Dazzle Ship



Merchant vessel dazzle-painted as seen through a submarine periscope.



The same vessel on identical course painted grey.

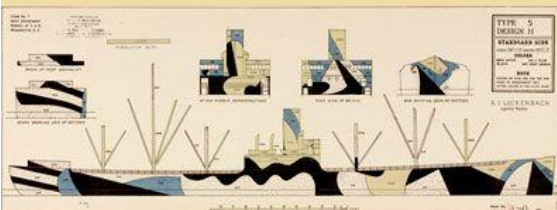
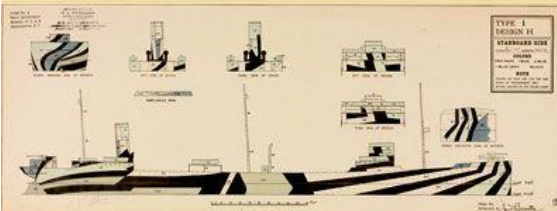
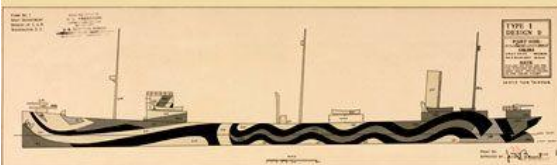
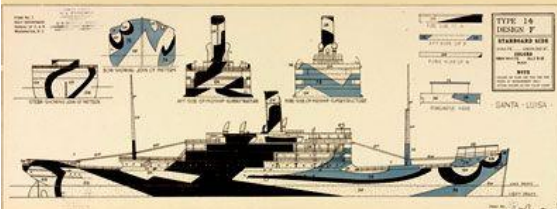
Objective: To take Value & Pattern and transform an everyday object into a dazzle object.

Dazzle Ships were designed during WWI by British Marine artist Norman Wilkinson and a staff of primary women artists not to camouflage, but to distort a ship's appearance when viewed through a telescope of a German U-Boat. Using strongly contrasting blocks of color, value shifts, patterns with stripes and curves, Dazzle designs transformed ships into a confusing array of multi-directional shapes, making it difficult to gauge a ship's direction or speed.

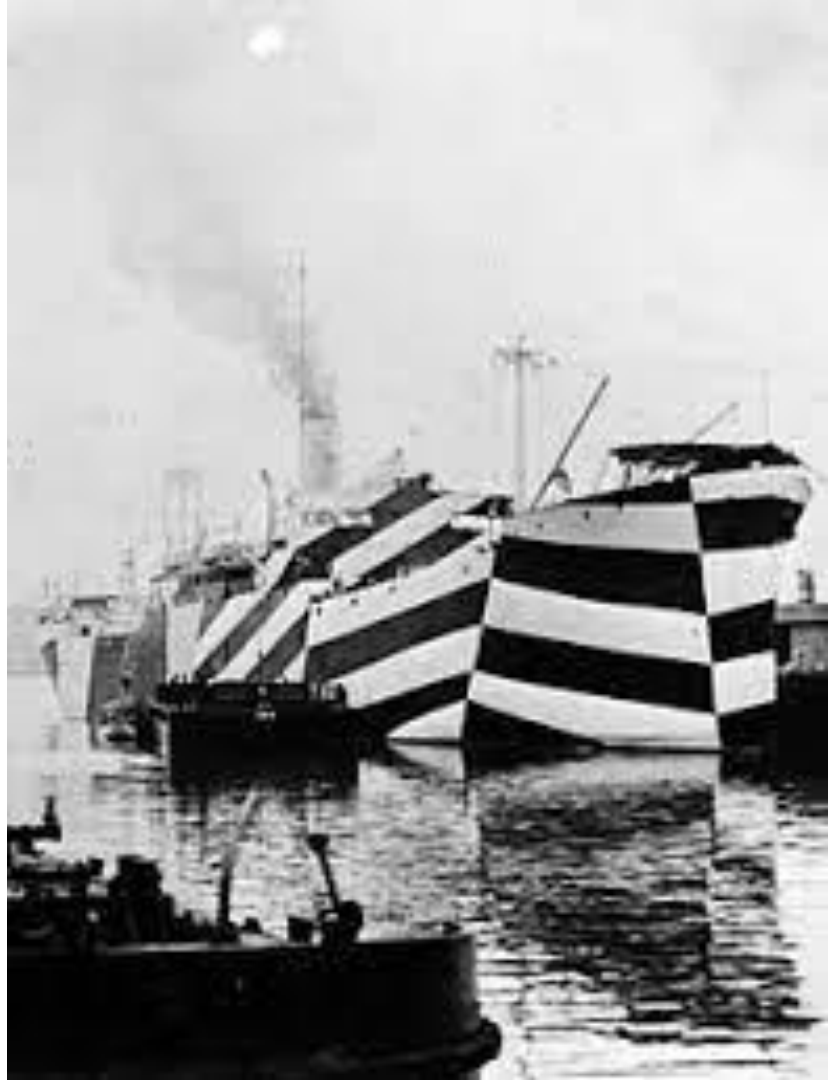
<https://vimeo.com/154264666>











STANDARD SHIPS (C CLASS)

SCALE 1/1000

LENGTH 347 FEET

Displacement 4,800 Tons (full load)

TYPE 24

CLASS M.A.

2000 Tons

1918



PORT

STANDARD SHIPS (C CLASS)

SCALE 1/1000

LENGTH 347 FEET

Displacement 4,800 Tons (full load)

TYPE 24

CLASS C.X

2000 Tons

1918

Diagrams of hull and superstructure of standard ships.



PORT



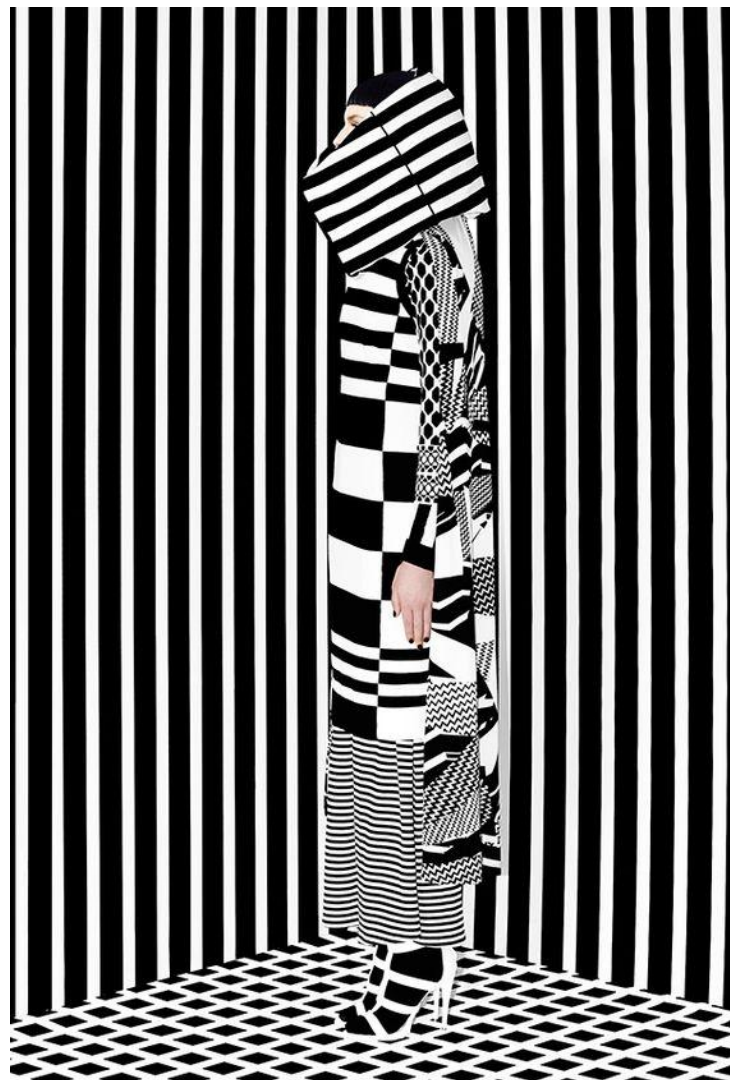
ARCHITECTURE











DAZZLE OBJECT!

PATTERN

VALUE

SHAPE

TO OBSCURE / CAMOUFLAGE

Ciara Phillips, *Every Woman* <https://vimeo.com/168048090>

Peter Blake, Carlos Cruz Diaz, Tobias Rayburger

Tauba Auerbach

<https://www.1418now.org.uk/commissions/dazzle-ship/>

