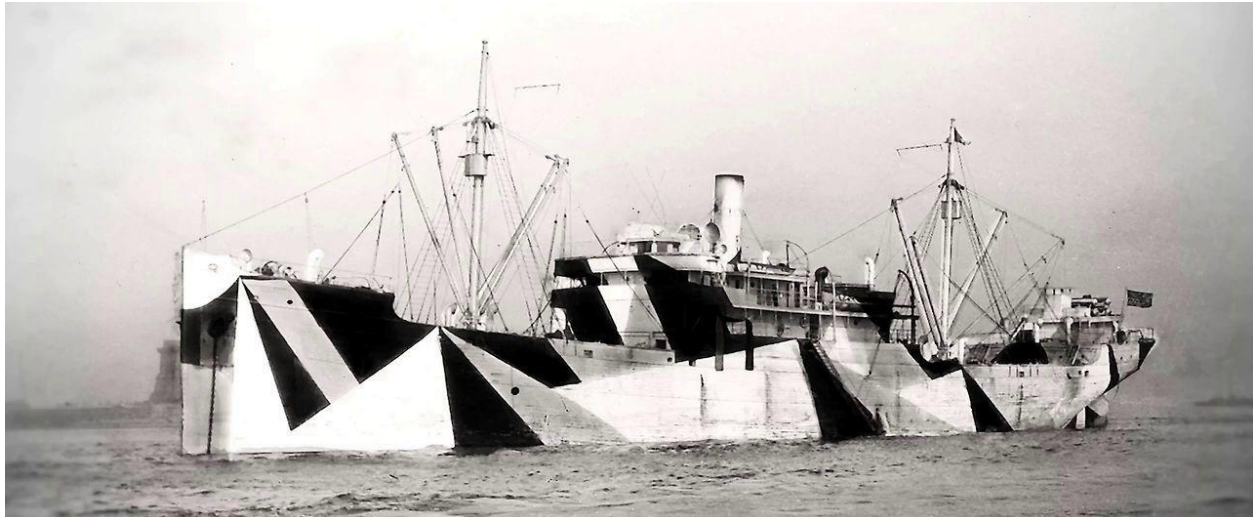


**Dazzle Ship Value Assignment**  
**2D Design / Murphy**  
**Lehigh AAD / Spring 2021**



**Dazzle Ships** were designed during WWI by British Marine artist Norman Wilkinson and a staff of primary women artists, not to camouflage, but to distort a ship's appearance when viewed through a telescope of a German U-Boat. Using strongly contrasting blocks of color, value shifts, patterns with stripes and curves, Dazzle designs transformed ships into a confusing array of multi-directional shapes, making it difficult to gauge a ship's direction or speed.

**Objective: To take Value & Pattern and transform an everyday object into a dazzle object.**



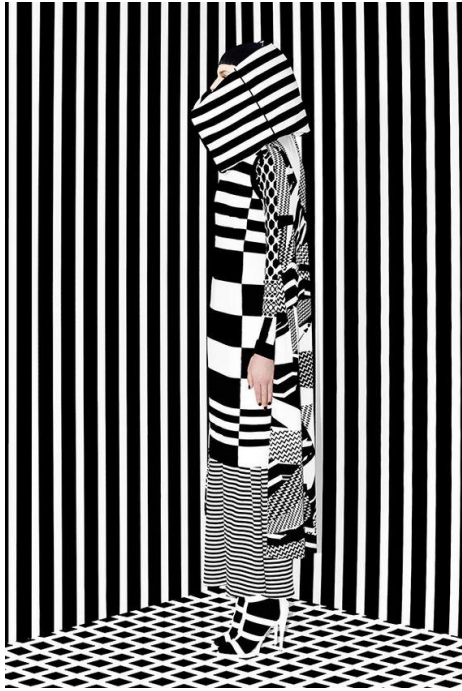
**Step 1**

Create a series of Dazzle Patterns using at least 3 grays from your 9 step Value Chart. Utilize stripes, curves and irregular shapes to create an unusual pattern. One of your 3 grays must be a middle gray. Draw and paint your pattern in 3" x 6" thumbnail blocks.



**Step 2**

Apply your design to an everyday object such as your sneaker, a car, bunch of fruit etc.... Your objective is to obscure the scale and orientation of your object. Think fashion design, automotive design, architecture. Final design should be on Bristol Board and be at least 9" x 9"



Tools:

sketchbook, pencil, ruler, masking tape (optional), paint brush, black and white paint, palette paper, water and paper towel.



**Resources:**

<https://www.pinterest.com/deirdremurphy50/2d-dazzle-ships/>

<https://publicdomainreview.org/collection/dazzle-ships>

<https://vimeo.com/154264666>

**Contemporary Artist:**

Ciara Phillips, *Every Woman* <https://vimeo.com/168048090>

Peter Blake, Carlos Cruz Diaz, Tobias Rayburger

Tauba Auerbach

<https://www.1418now.org.uk/commissions/dazzle-ship/>

